

GRADE IV QUARTER FOR AP/GP

Plint Area = 196 Sqft = 18.21 Sqm.

1. Civil work -@ Rs. 6500/-Sqm.	Rs. 118365.00
2. For still struss @ Rs.450/-Sqm	Rs. 8195.00
3. For white antitreatment @ Rs. 200/- Sqm	Rs. 3642.00
4. For aluminium casement, window @ Rs. 700/- Sqm	Rs. 12747.00
5. For paint 1% of cost of civil work	Rs. 1184.00
6. For Weather coat for external finish 1% of CW	Rs 1184.00
7. Normal preparation of site 1% of cost of civil work	Rs. 1184.00
8. For sanitary installation @ 8% of cost of civil work	Rs 9469.00
9. Internal water supply @ 5% of cost of civil work	Rs 5918.00
10. For internal Road path etc.@ 2.50 of CW	Rs. 2959.00
11. For Deep tube well L S	Rs. 22500.00
12. For internal /External Electrification @13% of CW	Rs 15387.00
13. Campus lighting @ 3% of cost of CW	Rs. 3551.00
14. For fire fighting 0.5% of CW	Rs. 592.00
Total	Rs 206877.00

Contingencies -----

Rs. 3000.00

Grand Total

Rs 210000.00

(Rupees Two Lakhs ten thousand only)

Prepared by



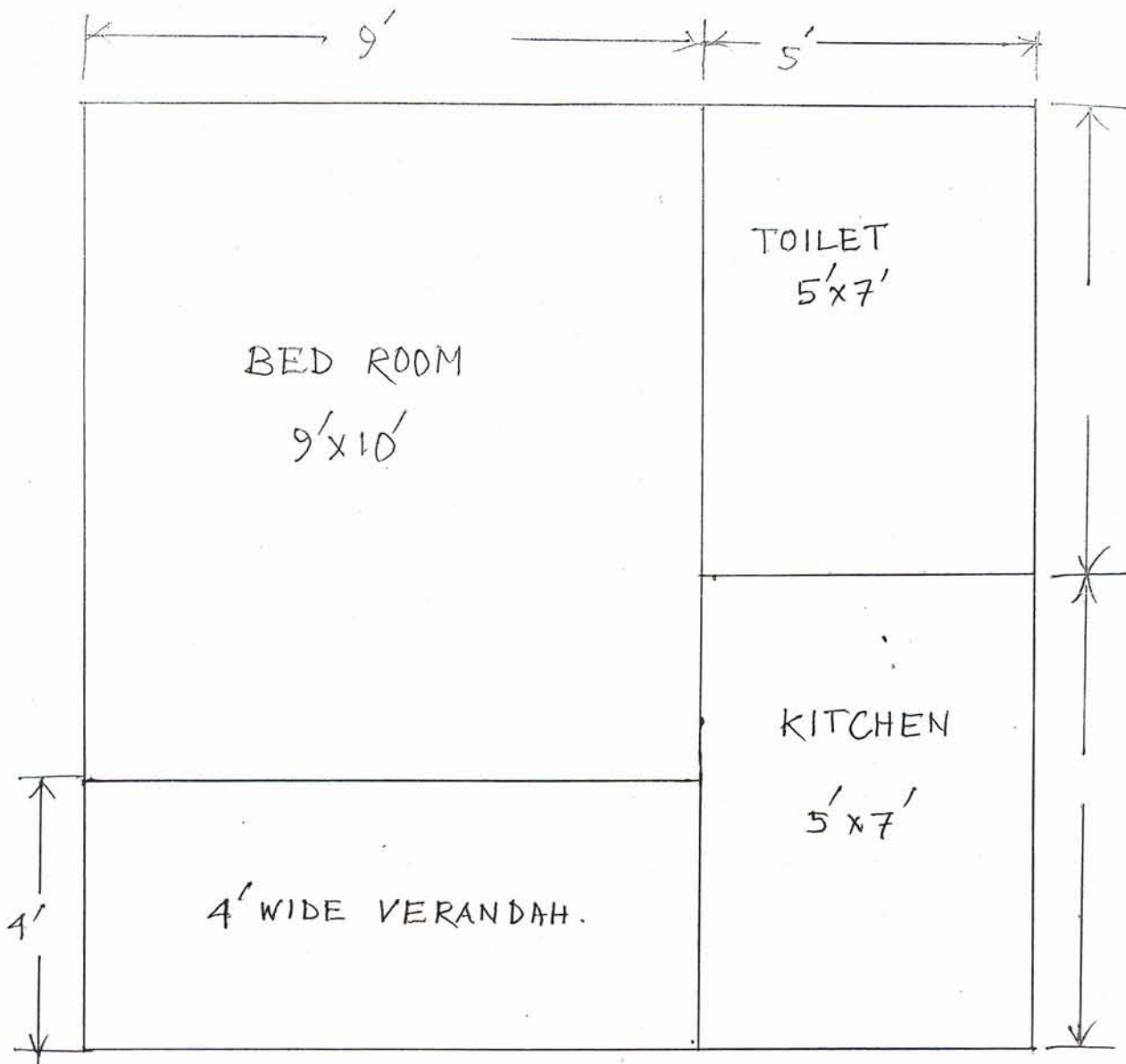
(B. Das)

Junior Engineer,
O/O the Commissioner, P&RD,
Assam



(A. Rahman)

Joint Director(Tech)
O/O the Commissioner, P&RD
Assam



AREA - $196 \text{ sq ft} = 18.21 \text{ sq/m}$.

GRADE IV Quarter.

[Handwritten signature]