

# GOVT. OF ASSAM



DIBRUGARH ZILA PARISHAD  
DIBRUGARH

Name of Work

Construction of Community Hall under 1<sup>st</sup> (First) installment of 2011-2012 relating to General Performance Grant to PRIs under the award of 13<sup>th</sup> Finance Commission during 2011-2012.

Estimated Amount  
Rs. 8,00,000.00  
(Rupees Eight Lakhs) only

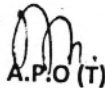
## ABSTRACT

Name of Work	:	Construction of Community Hall under 1st ( First ) Installment of 2011-12 relating to General Performance Grant to PRIs under the award of 13th Finance Commission during 2011-12	
Sanctioned vide	:	FEA (SFC) 26/2012/41	Dated 02/03/2012
Total Allocation for the District	:	Rs. 13,600,000.00	
Total Unit for the district	:	17 Nos.	
Allocation for each unit	:	Rs. 800,000.00	
(A) Estimated Amount for Part - I :	Rs.	500,000.00	
(B) <u>Estimated Amount for Part - II :</u>	Rs.	<u>300,000.00</u>	
Grand Total	Rs.	800,000.00	

(Rupees Eight Lakh ) only



J.E.  
Dibrugarh Zilla Parishad  
Dibrugarh



A.P.O (T)  
Dibrugarh Zilla Parishad  
Dibrugarh



C.E.O  
Dibrugarh Zilla Parishad  
Dibrugarh

Name of Work : Construction of Community Hall under 1st (First) installment of 2011-12 relating of General Performance Grant to PRIs under the award of 13th Finance Commission during 2011-12.( PART - I)

Item No. 1/1.1 : Earthwork in excavation for foundation trenches of walls, retaining walls, footing of column, steps, eptic tank etc. .. Including bailing out water where necessary as directed and specified.

(A) (a) Surface over 100mm in width or girth

Footing -	1x14x0.90x0.90x0.90	=	10.21 m3
For Step -	1x1x3.65x1.50x0.15	=	0.82m3
Total		=	<u>11.03m3</u>

.@Rs.64.67/m3

..... Rs.

713.00

Item No.2/4.1.1 : Providing brick soling in foundation and under floor with stone /best quality picked jhama brick, sand packed and laid to level and in panel after preparing the subgrade as directed and including all labour and materials and if necessary dewatering complete.

(a) Brick on flat soling.

Footing base	1x14x0.90x0.90	=	11.34m2
For Step	1x1x3.65x1.50	=	5348m2
Below tie beam	1x2x10.95x0.25	=	5348m2
	1x4x6.10x0.25	=	6.10m2
	1x2x3.65x0.25	=	1.83m2
	1x5x2.00x0.25	=	2.50m2
	1x1x10.95x6.10	=	66.80m2
	1x2x3.65x2.00	=	<u>14.60m2</u>
Total			114.13m2

.@Rs.286.37/m2

.....Rs.

32,683.00

Item No.3/2/1.1 : Plain cement concrete work with coarse aggregate of sizes 13m to 32m in foundation bed for footing steps, walls, brick works etc.as directed and specified including dewatering if necessary and curing complete.

(a) Prop. 1:3:6

Footing base	1x14x0.90x0.90x0.075	=	0.85m3
For Step	1x1x3.65x1.50x0.075	=	0.41m3
Total		=	1.26m3

.@Rs.3,733.63/m3

.....Rs.

4,704.00

**C.O Rs.**

**38,100.00**

Item No. 4/18.1.1 : Supplying, fitting and fixing in position reinforcement bars conforming to relevant I.S. Code for R.C.C. work/R.B walling including straightening, cleaning, cutting and bending to proper shapes and length as per details, supplying and binding with 20G annealed black wire and placing in position with proper blocks, supports, chairs, spacers etc. complete.

(b) TMT Bar. (i) TATA/Sail

8mm $\phi$ Lintel & Post Plate	14x2x7x0.90x.39	=	0.69Qtl
	2x2x4x10.95x0.39	=	0.68Qtl
	2x2x4x6.10x0.39	=	0.38 Qtl
	1x5x4x2.00x0.39	=	0.16Qtl
	1x2x4x3.65x0.39	=	0.11Qtl
Gable	2x2x4x3.40x0.39	=	0.21Qtl
8mm $\phi$ Chajjah	4x25x1.10x0.39	=	0.43Qtl
	2x42x1.10x0.39	=	0.72Qtl
Distribution	2x4x7.10x0.39	=	0.22Qtl
	1x4x7.80x0.39	=	0.12Qtl
	2x4x4.15x0.39	=	0.13Qtl
12mm $\phi$ main bar coloumn			
	8x4x5.30x0.89	=	1.51Qtl
Gable End	2x4x6.80x0.89	=	0.48 Qtl
Front Ver & Toilet	4x4x4.65x0.89	=	0.66Qtl
Tie-Beam	2x4x10.95x0.89	=	0.77 Qtl
	4x4x6.10x0.89	=	0.86Qtl
	2x4x3.65x0.89	=	0.26Qtl
	5x4x2.0x0.89	=	0.36Qtl
	Total	=	8.75 Qtl
Add 10% for Lapping, Bending etc.		=	0.875Qtl
	Grand Total	=	9.63 Qtl

.@Rs.5,290.41/Qtl

.....Rs. 50,946.00

(c) I.S.I. Approved M.S. Rod

6mm $\phi$ Stirrups in Column

	8x35x0.75x0.22	=	0.46Qtl
	2x45x0.75x0.22	=	0.15Qtl
	4x31x0.75x0.22	=	0.20Qtl
In Tie-Beam	2x74x0.90x0.22	=	0.29Qtl
	4x42x0.90x0.22	=	0.33Qtl
	5x14x0.90x0.22	=	0.14Qtl
	2x25x0.90x0.22	=	0.10Qtl
In Post Plate	2x74x0.48x0.22	=	0.16Qtl
	2x42x0.48x0.22	=	0.09Qtl
Gable	4x24x0.48x0.22	=	0.10Qtl
	5x14x0.48x0.22	=	0.07Qtl
	2x25x0.48x0.22	=	0.05Qtl
	Total		214Qtl

.@Rs.5,241.78/Qtl

.....Rs. 11,217.00  
C.O Rs. 100,263.00

Item No.5/3/1.1 : Providing form work of ordinary timber planking so as give a rough finish including centering, shuttering, strutting and propping etc. height of propping and centering below supporting floor to ceiling not exceeding 4.0M and removal of the same for in-situ reinforced concrete and plain concrete work in :

B.F. Rs. 100,263.00

3.1.1.1 Foundation, footing bases of columns, pile cap, raft and mass concrete work etc. (ii) Using 25 mm thick

Footing base	14x4x0.75x0.15	=	6.30m <sup>2</sup>	
Column upto plint	14x4x0.25x1.25	=	17.50m <sup>2</sup>	
	Total	=	23.80m <sup>2</sup>	
.@Rs.140.84/m <sup>2</sup>			.....Rs.	3,352.00

3.1.1.2 Sies of tie beams, plinth beams, grade beams etc. at or below plinth level (ii) Using 25mm thick plank

Tie Beam	2x2x10.95x0.30	=	13.14m <sup>2</sup>	
	4x2x6.10x0.30	=	14.64m <sup>2</sup>	
	5x2x2.0x0.30	=	6.00m <sup>2</sup>	
	2x2x3.65x0.30	=	4.38m <sup>2</sup>	
	Total	=	38.16m <sup>2</sup>	
.@Rs.191.27/m <sup>2</sup>			.....Rs.	7,299.00

3.1.1.3 Columns, Pillars, Posts & strut (a) Square, Rectangular, etc...(ii) 25mm

Post	8x4x0.20x3.65	=	23.36m <sup>2</sup>	
	2x4x0.20x5.15	=	8.24m <sup>2</sup>	
	4x4x0.20x3.00	=	9.60m <sup>2</sup>	
	Total	=	41.20m <sup>2</sup>	
.@Rs.213.73/m <sup>2</sup>			.....Rs.	8,806.00

C.O Rs. 119,720.00

Item No. 6/2.2.1

B.F. Rs. 119,720.00

Providing and laying plain/reinforced cement concrete works in prop 1:2:4 including dewatering if necessary and curing complete but excluding cost of form work and reinforcement for reinforced cement concrete work.

(a) In substructure up to plinth level. Foundation, footing, columns with base, tie and plinth beam, pile cap.. Etc. up to plinth level.

Footing	14x1x0.75x0.75x0.15 - 1.18m3	=	0.38m3	
	14x0.10/30.752+0.252+0.752x0.252	=	0.44m3	
	14x1x0.25x0.25x0.50	=	1.64m3	
	2x4x10.95x0.25x0.30	=	2.29m3	
	5x1x6.10x0.25x0.30	=	0.75m3	
	5x1x2.00x0.25x0.30	=	0.55m3	
	2x1x3.65x0.25x0.30	=	0.39m3	
Pst, Tie Beam to PL	14x1x0.25x0.25x0.45	=	7.62m3	
	Total	=		
				.....Rs. 36,074.00
	.@Rs.4,734.15/m3			

(b) In superstructure upto P.L. (ii) Columns, Pillars etc.

Post	8x1x0.20x0.20x3.65	=	1.17m3	
	2x1x0.20x0.20x5.15	=	0.41m3	
	4x1x0.20x0.20x3.00	=	0.48m3	
	2x2x10.95x0.13x0.15	=	0.85m3	
	2x2x6.10x0.13x0.15	=	0.48m3	
	2x2x3.40x0.13x0.15	=	0.27m3	
	5x1x2.00x0.13x0.15	=	0.20m3	
	2x1x3.65x0.13x0.15	=	0.14m3	
	2x1x7.10x0.50x0.10	=	0.71m3	
	1x1x7.80x0.50x0.10	=	0.39m3	
	2x1x4.15x0.50x0.10	=	0.42m3	
	Total	=	5.52m3	
	.@Rs.4,929.24/m3			.....Rs. 27,209.00

Item No.7/4.1.4

Brick work in cement mortar with 1st class brick including racking out joints and dewatering if necessary racking out joints and dewatering if necessary and curing complete as directed in sub-structure up to plinth level. (C) In prop. 1:5

Plinth wall -	2x1x10.95x0.45x0.25	=	2.47m3	
	4x1x6.10x0.45x0.25	=	2.75m3	
	5x1x2.0x0.45x0.25	=	1.13m3	
	2x1x3.65x0.45x0.25	=	0.83m3	
Step	1x1/2x3.65x1.50x0.75	=	2.05m3	
	Total	=	9.23m3	
	.@Rs.4,632/m3			.....Rs. 42,756.00
				<b>C.O Rs. 225,759.00</b>

**Item No. 8/2.1.3**

Providing and laying 25mm thick damp proof course with cement concrete in prop 1:1:5:3 with graded stne agg. Of 10mm down nominal size including providing approved damp proof admixture in prop. As recommended by the manufacture including curing etc. complete as directed.

B.F Rs. 225,759.00

2x1x10.95x0.13	=	2.85m2
2x1x6.10x0.13	=	1.59m2
3x1x2.00x0.13	=	0.78m2
1x1x3.65x0.13	=	0.47m2
<b>Total</b>	<b>=</b>	<b>5.69m2</b>

.@Rs.150.00/m2

.....Rs. 854.00

**Item No. 9/1.3**

Earth /sand filling in plinth in layers not more than 150mm thick including necessary carriage, watering, ramming etc. complete as directed (C ) with river sand or silt

1x1x10.95x6.10x0.75	=	50.10m3
2x1x3.65x2.00x0.75	=	1095m3
<b>Total</b>	<b>=</b>	<b>61.05m3</b>

.@Rs.32.75/m3

.....Rs. 19,704.00

**Item No. 10/4.1.7**

112mm thick 1st class brick nogged wall in cement mortar including racking out joints and curing complete as directed in super structure above plint up to 1st floor level. (b) Prop. 1:4

2x1x10.95x3.65	=	79.94m2
2x1x6.10x3.65	=	44.53m2
2x1/2x6.10x1.50	=	9.15m2
3x1x2.00x3.00	=	18.00m2
1x1x3.65x3.00	=	10.95m2
4x1x3.65x1.20	=	(-)17.52m2
4x1x3.05x1.20	=	(-)14.64m2
1x1x1.00x2.10	=	(-)2.10m2
2x1x0.80x2.10	=	(-)3.36m2
<b>Total</b>	<b>=</b>	<b>124.95m2</b>

.@Rs.518.62/m2

.....Rs. 64,802.00

**Item No. 11/18.3.1**

: Providing fitting, hoisitng and fixing of roof truses including purlings fabricated out of M.S. black - tubes conforming to relevant I.S. Code as per approved design and drawing as directed

**48.30 mm OD, Main Building**

Tie	2x1x6.10x3.61	=	0.440Qtl
Rafter	4x2x4.10x3.61	=	1.184Qtl
Purlin	5x2x12.15x3.61	=	4.386Qtl
K.Post	2x1x1.50x3.61	=	0.108Qtl
Bottom runner	4x1x10.95x3.61	=	1.581Qtl
Front Ver-Tie	2x1x3.65x3.61	=	0.263Qtl
Rafter	2x2x2.65x3.61	=	0.382Qtl
Purlin	3x1x2.60x3.61	=	0.563Qtl
Toilet Rafter	3x1x2.60x3.61	=	0.281Qtl
Purlin	3x1x4.85x3.61	=	0.525Qtl
			<b>9.773Qtl</b>

**C.O**

**Rs. 311,119.00**



	B.F		Rs	
				311,119.00
			9.713 Qtl	
48.30mm OD, Main Building -				
Struts	2x2x1.50x3.61	=	0.220Qtl	
	2x2x1.20x3.61	=	0.173Qtl	
	2x2x1.30x3.61	=	0.190Qtl	
	2x2x0.90x3.61	=	0.130Qtl	
Verandah	2x1x0.90x3.61	=	0.065Qtl	
	2x2x1.00x3.61	=	0.144Qtl	
	2x2x0.80x3.61	=	0.12Qtl	
	Total	=	10.756Qtl	
Add 5% for baseplate, cleat joints, purlin etc.		=	0.537Qtl	
.@Rs.5875.00/Qtl			.....Rs.	66,343.00
<b>Item No. 12/8.1.2</b>	Providing corrugated galvd. Iron sheet roofing of TATA Shaktee/SAIL including fitting and fixing necessary galvd. J or L hooks, bolt and nuts 8mm dia with bitumen washer 25mm dia x 3mm thick and 1.6m thcik limpet washer complete.			
	(d) 0.60mm thick			
Main Building	1x2x12.45x4.25	=	105.83m2	
Verandah	1x2x2.75x2.80	=	15.40m2	
Toilet	1x1x5.15x2.75	=	14.16m2	
	Total	=	135.39m2	
.@Rs.417.71/m2			.....Rs.	56,554.00
<b>Item No. 13/8.1.4</b>	: Providing galvd. Iron ridging of TATA Shaktee/SAIL including supply and fixing necessary galvd. Screws/washer etc. complete as directed			
	(d) 0.60 mm thick (ii) 230mm lapping			
	1x1x12.45		12.45 Rm	
	1x1x2.75		2.75 Rm	
	Total		15.20 Rm	
.@Rs.144.67/Rm			.....Rs.	2,199.00
<b>Item No. 14/10.2</b>	: Providing fitting and fixing M.S. grill of required pattern for windows/ Clerestory windows/ opening with M.S. flat at required spacing in frame all round square or round M.S. bars with round headed bolts and nuts or screws			
	(I) Plain grill (C) Fixed to brick /r.c.c			
Main building	1x4x3.65x1.30	=	18.98m2	
	1x4x3.05x1.30	=	15.86m2	
	1x1x3.65x0.05	=	1.83m2	
Toilet/Wash	1x2x1.80x0.50	=	1.80m2	
	1x2x2.0x0.50	=	2.00m2	
	Total	=	40.47m2	
.@22.00Kg/m2 (Approx)		=	890.34Kg.	



.@Rs.65.55 /Kg

Add 1% for contingency

Say

( Rupees Five lakh ) only

.....Rs. 58,362.

Rs. 4,945

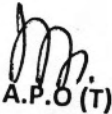
Rs. 499,522

Rs. 500,000.



J.E.

Dibrugarh Zilla Parishad  
Dibrugarh



A.P.O (T)

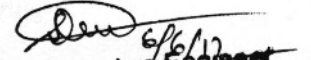
Dibrugarh Zilla Parishad  
Dibrugarh



C.E.O

Dibrugarh Zilla Parishad  
Dibrugarh

T.S. is accorded for Rs. 5,00,000/- (PH-I).  
(Rupees five lakh) only to be drawn  
from the H/A. 13th finance - 2011-12

  
6/6/12  
Executive Engineer  
Zila Parishad : Dibrugarh

**Name of Work** : Construcion of Community Hall under 1st (First) installment of 2011-12 relating of General Performance Grant to PRIs under the award of 13th Finance Commission during 2011-12.( PART - II)

**Item No. 15/5.1.5** : 65mm thick cement concrete floor consiting of 53mm under layer of cement concrete in prop 1:3:6 and 12 mm thick wearing coarse of cement sand plastering in prop 1:2 laid in panels and finished including curing etc. complete as directed

Main building	1x1x10.95x6.10	=	66.80m2
Toilet /Verandah	1x2x3.65x2.00	=	14.60m2
Total		=	81.40m2

**Item No. 16/6.2.3** .@Rs.435.43/m2 .....Rs. 35,444.00

15mm thick cement plaster in single coat on fair side of brick /concrete walls for interior plastering up to 1st floor level including arises, internal rounded angles, chamfers and /or rounded angles not exceeding 80mm in girth and finished even and smooth including curing complete as directed (b) In Prop; 1:4

Qnty. B.F from ltme No. 10/4.1.7		=	124.95m2
Window Sill	4x2x3.65x0.15	=	4.38m2
	4x2x3.05x0.15	=	3.66m2
	8x2x1.30x0.15	=	3.12m2
	1x2x3.65x0.15	=	1.10m2
	2x2x1.80x0.15	=	1.08m2
	2x2x2.00x0.15	=	1.20m2
	5x2x0.50x0.15	=	0.75m2
	2x4x0.20x3.0	=	4.80m2
Total		=	145.04m2

**Item No. 17/6./2.2** : .@Rs.110.21/m2 Rs. 15,985.00  
15 mm thick cement plaster in single coat on rough side of single or half brick wall for interior plastering upt ot 1st floor level includign arises, internal rounded angles, not exceeding 80mm in girth and finished even and smooth including curring complete as directed (b) Prop. 1:4

Qnty. Same as Item No. 10/4.1.7 =124.95m2

**Item No. 18/5.1.10** .@Rs.111.25/m2 .....Rs. 13,901.00  
Cement plaster skirting with cement mortar in prop 1:3 finished with a floating coat of neat cement including rounding of junctions with floor (b) 20mm thick

Plinth	1x2x10.95x0.75	=	16.43m2
	1x2x10.10x0.75	=	1515m2
	1x1x3.65x1.20	=	4.38m2
	2x1/2x0.75x1.20	=	0.90m2
	1x2x10.95x0.20	=	4.38m2
	1x2x6.10x0.20	=	2.44m2
	1x1x3.65x0.20	=	0.73m2
	1x1x1.0x0.20	=	(-)0.20m2
	1x1x1.0x0.20	=	(-)0.16m2
	1x1x0.80x1.50	=	10.80m2
	2x2x2.0x1.50	=	12.00m2
	2x1x0.80x1.50	=	(-)2.40m2
Total		=	64.45m2

.@Rs.198.34/m2 .....Rs. 12,783.00  
**C.O. 78,113.00**

Item No. 19/9/1.2

B.F.

78,113.00

Providing wood work in frame (Chowkaths) of doors, windows, clerestory windows and other similar works wrought, framed and fixed in position contact with C.C. or brick masonry wall including supplying, fitting and fixing with M.S hold fast etc. as directed and specified.

(b) With 1st class timber (Hollock/Bonsum)

D/Chow	3x2x2.10x0.13x0.08	=	0.131m3
	1x1x1.0x0.13x0.08	=	0.010m3
	2x1x0.80x0.13x0.08	=	0.017m3
			0.158m3

.@Rs.46,853.38/m3

.....Rs. 7,403.00

Item No. 20/9.12.1

Providing and fixing flush door shuters solid core construction with frame of 1st clas hard wood with cross band and face veneered ply wood face panels conforming to relevant I.S. code including oxidised iron butt hinges.

D.	1x1x2.10x1.0	=	2.10m2
DI.	2x1x2.10x0.80	=	3.36m2
	Total	=	5.46m2

.@Rs.2,299.28/m2

.....Rs. 12,554.00

Item No. 21/9.3.1

: Providing wood work in frame false ceiling pratitions etc. sawn, wrought, framed hoited and fixed in position with spikes, nais, M.S flat angle /cleats with bolt and nuts complete (b) with hollock /bonsum

C/joist	1x11x6.10x0.08x0.05	=	0.27m3
	1x7x10.95x0.08x0.05	=	0.31m3
Ver	1x5x2.0x0.08x0.05	=	0.04m3
	1x4x3.65x0.08x0.05	=	0.06m3
Toilet & Wash	2x3x1.80x0.08x0.05	=	0.04m3
	2x3x2.00x0.08x0.05	=	0.05m3
	Total	=	0.77m3

.@Rs.29,812.40/m3

.....Rs. 22,956.00

Item No. 22/7.2.1

Providing fitting and fixing A.C. building board in ceiling with necessary nails, wood screws including 1st class local wood including painting two coats to timber beads as directed (a) 4mm thick

Main building	1x1x10.95x6.10	=	66.80m2
Ver	1x1x3.65x2.00	=	7.30m2
Toilet & Wash	1x2x1.80x2.00	=	7.20m2
	Total	=	81.30m2

.@Rs.269.44/m2

.....Rs. 21,905.00

C.O

Rs. 142,931.00

Item No. 23/9.4.1

Providing barge board of size 200mm x20mm with 1st class local Hollock/  
Bonsum timber including fitting and fixing with necessary wood screws  
etc. complete

B.F

Rs.

142,931.00

Main Building	1x2x12.20	=	24.40Rm
	2x2x4,10	=	16.40Rm
Ver	1x2x2.60	=	5.20Rm
	1x2x2.70	=	5.40Rm
Toilet	1x2x2.60	=	5.20Rm
	1x1x4.90	=	4.90Rm
	Total	=	61.50 m2

.@Rs.224.81/m2

.....Rs.

13,826.00

Item No. 24/13.3.5

Providing two coats of JK wall Putty (white cement based putty for concrete  
mortar walls and ceiling both internal and external) after removing all  
loosely adhreing material from the wall surface with the help of emery  
stone,putty blade or wire brush and moistening the wall with sufficient  
quantity of clean water as specified and directed by the department

Inside	1x2x10.95x3.65	=	79.94m2
	1x2x6.10x3.65	=	44.53m2
	1x1x10.95x6.10	=	66.80m2
Toilet	2x2x1.80x3.00	=	21.60m2
	2x2x1.50x3.00	=	18.00m2
	2x1x1.80x1.50	=	5.40m2
Ver Ceiling	1x1x3.65x2.10	=	7.67,2
Outside	1x2x10.95x3.65	=	79.94m2
	1x2x6.10x3.65	=	44.53m2
Gable	2x1/2x6.10x1.50	=	9.15m2
	1x2x2.00x3.00	=	12.00m2
Ver Post	2x4x0.20x3.00	=	4.80m2
Less Opening B.F. from item no. 14/10.2 = (40.47m2x2)		=	(-)80.94
	Total	=	313.42m2

.@Rs.42.61/m2

.....Rs.

13,355.00

C.O Rs.

170,112.00

		B.F	Rs.	170,112.00
Main building	1x2x10.95x3.65	=	79.94m <sup>2</sup>	
	1x2x6.10x3.65	=	44.53m <sup>2</sup>	
	1x1x10.95x6.10	=	66.80m <sup>2</sup>	
Toilet/Wash	2x2x1.80x3.00	=	21.60m <sup>2</sup>	
	2x2x1.50x3.00	=	18.00m <sup>2</sup>	
	2x1x1.80x1.50	=	5.40m <sup>2</sup>	
Ver Ceiling	1x1x3.65x2.10	=	7.67m <sup>2</sup>	
Less Opening B.F from item No. 14/10.2		=	(-)40.47m <sup>2</sup>	
	Total	=	203.47m <sup>2</sup>	

**Item No. 25/13.9.2**

Finishing old/new wall with water proofing weather coat smooth antifungal exterior painting of Apex brand of Asian paints and of required shade after cleaning and clearing the surface etc. including scaffolding complete as directed at all level (two coats)

Outer face	1x2x10.95x3.65	=	79.94m <sup>2</sup>
	1x2x6.10x3.65	=	44.53m <sup>2</sup>
	2x1/2x6.10x1.50	=	9.15m <sup>2</sup>
	1x2x2.00x3.00	=	12.0m <sup>2</sup>
Ver Post	2x4x0.20x3.00	=	4.80m <sup>2</sup>
Less Opening B.F. from item no. 14/10.2		=	(-) 40.47m <sup>2</sup>
	Total	=	109.95m <sup>2</sup>

.@Rs.112.21/m<sup>2</sup>

.....Rs. 12,337.00

**Item No. 26/13.6.3**

Applying priming coat over new wood and wood based surfaces over 100mm in girth/width after and including preparing the surface by thoroughly cleaning oil, grease, dirt foreign matter, sand papering and knotting.

(b) With ready mixed paint, wood primer (Pink)

D/Chow	3x2x2.10x0.25	=	3.15m <sup>2</sup>
	1x1x.00x0.25	=	0.25m <sup>2</sup>
	2x1x0.80x0.25	=	0.40m <sup>2</sup>
	1x2.0x2.10x1.00	=	4.20m <sup>2</sup>
	2x2.0x2.10x0.80	=	6.72m <sup>2</sup>
Skirting B.F. from Item No. 18/5.1.10		=	64.45m <sup>2</sup>
Barge board, B.F from item no. 23/9.4.1 = 61.50Rm x0.20		=	12.30m <sup>2</sup>
M.S. Grill, B.F. from item no. 14/10.2 = 40.47m <sup>2</sup> x1.5		=	60.71m <sup>2</sup>
	Total	=	152.18m <sup>2</sup>

.@Rs.30.91/m<sup>2</sup>

.....Rs. 4,704.00

C.O Rs. 187,153.00



**Item No. 27/13.6.5** Painting two coats (excluding priming coat) on new wood and wood based surface with enamel paint of approved brand and manufacture to give an even shade including cleaning the surfaces of all dirt, dust and other foreign matter sand papering and stopping

B.F Rs. 187,153.00

(i) Surface over 100mm in width or girth (B) High gloss (Asian paing/ Berger Paint/ICI Paint/J&N Paint/Nerolac)

Qty. Same as above item = 152.18m<sup>2</sup>

.@Rs.54.82/m<sup>2</sup>

.....Rs. 8,343.00

**Item No. 28/15.2.1** Supplying, fitting, fixing anodised aluminium fitting of approved make, resonably smooth, free from sharp edges and corners, flaws and other defects and with counter sunk holes for screws including necessary alumunium screws etc. complete.

(a) Sliding door bolts (i) 300mm x 16mm  
1x2=2 No.

.@Rs.290.34/each

.....Rs. 581.00

(b) Tower bolts (iii) 200mm x 12mm  
2x3=6 Nos

.@Rs.98.17/each

.....Rs. 589.00

(c) Door handle (iii) 150mm  
1x4=4Nos.

.@Rs.75.37/each

.....Rs. 301.00

**WATER SUPPLY AND SANITARY WORKS :-**

**Item No. 29/6.2.1** Supplying and placing ferrocemen septic tanks of rectangular shape into pit with manhole cover with cleaning arrangment over single brick flat solong and 75mm, 1:3:6P.C.C. Baffle wall, inlet and outlet etc. are provided at suitble points complete as directed

(ii) 15 users

1x1=1No.@ Rs. 16,472.68/each

.....Rs. 16,473.00

**Item No.30/5.1.10** Supplying, fitting and fixingsucdtion pipes plain/leel ended, including supplying and fitting of accessories, lowering of assembly pipes concentrically complete as directed.

(II) PVC Pipe iii) 40mm dia

Pipe 1x3x6.10 = 18.30 Rm

Filter 1x1x3.00 = 3.00 Rm

.@Rs.249.71/Rm

.....Rs. 5,319.00

C.O Rs. 218,759.00

Item No.31/5.1.4	Labour for sinking tube well with 40 mm dia G.I. Pipes upto having strata, having potable water including fitting and fixing strainer, hand pump and other accessories as directed complete as in any soil	B.F	Rs.	218,759.00
	Pipe	1x3x6.10	=	18.30 Rm
	Filter	1x1x3.00	=	3.00 Rm
			=	21.30 Rm
	.@Rs.62.43/Rm			.....Rs.
Item No. 32/5.1.6	Supplying fitting and fixing Maya hand pump No. 6 for 40mm dia tube well wit all accessories complete as directed.			1,330.00
	1x1=1No.@ Rs. 1,107.00/each			.....Rs.
				1,107.00
Item No. 33/5.1.13	Supplying fitting and fixing ISI approved PVC filter 3.00m long			
	1x1x = 1 No. @ Rs. 1,748.25/- each			.....Rs.
				1,748.00
Item No. 34/1.1.9	Providing, fitting and fixing colour vitreous water closet wquatting pan (Indian type WC Orissa pattern) of size 530 x410mm with 'P' or 'S' trap of Parryware /Hihndware make with all fittings complete as directed			
	1x1x=1No. @ Rs.3,265.82/each			.....Rs.
				3,266.00
Item No. 35/1.4.1	Providing fitting and fixing white vitreous china flat back type lipped front urinal basin of (455 x 360x267)mm of Parryare/Cera make with all necessary fitting complete as directed (a) (i) White			
	1x1=1No.@Rs.2,293.00/each			.....Rs.
				2,294.00
Item No. 36/1.23.1	Supplying fitting and fixing pvc pipes of 6kg/cm2 (Suprem/Prince)or other ISI approved including joining, fitting and fixing etc. as necessary complete as directed and specified.			
	(a) In exposed surfaces or in trenches			
	(ii) 110mm dia			
	1x4.00=4.00 Rm @ Rs.512.93/Rm			.....Rs.
	(iv) 75mm dia			2,052.00
	1x3.50=3.50Rm@Rs. 26R7.45/Rm			.....Rs.
				936.00
Item No. 37/1.23.2	Supplying, fitting and fixing 87.5 degree PVC bend of (Supreme/Prince) or other ISI approved including joining, fitting and fixing etc. complete directed ad specified.			
	(a) In exposed or in trenches			
	(ii) 110mm dia			
	1x2=2Nos @ Rs. 216.76/each			.....Rs.
	(iii) 75S dia			434.00
	1x2=2Nos @ Rs. 137.40/each			.....Rs.
				275.00
				C.O. Rs.
				232,201.00



B.F. Rs. 232,201.00

Item No. 38/1.23.15	Supplying, fitting and fixing PVC reducing tee of (Supreme /Prince) or othe ISI approved including joining, fitting and fixing etc. complete as directred and specified		
	(a) In exposed or in trenches		
	(ii) 110mm x 75 mm		
	1x1x=1No. @ Rs. 366.16/each	.....Rs.	366.00
Item no. 39/1.24.3	Providing, fitting and fixing 75 mm dia PVC cowel of ISI make complete as directed and specified		
	1x1x=1No. @Rs.89.38/each	.....Rs.	89.00
	<b>Total</b>	<b>Rs.</b>	<b>232,656.00</b>
Item No. 40	Furniture & Sound System L.S	Rs.	62,000.00
	<b>Total</b>	<b>Rs.</b>	<b>294,656.00</b>
	Add 2% for Contengency	Rs.	5,893.00
	<b>Total</b>	<b>Rs.</b>	<b>300,549.00</b>
	<b>Say</b>	<b>Rs.</b>	<b>300,000.00</b>

(Rupees Three lakh) only

J.E.

Dibrugarh Zilla Parisad  
Dibrugarh

A.P.O (T)

Dibrugarh Zilla Parisad  
Dibrugarh

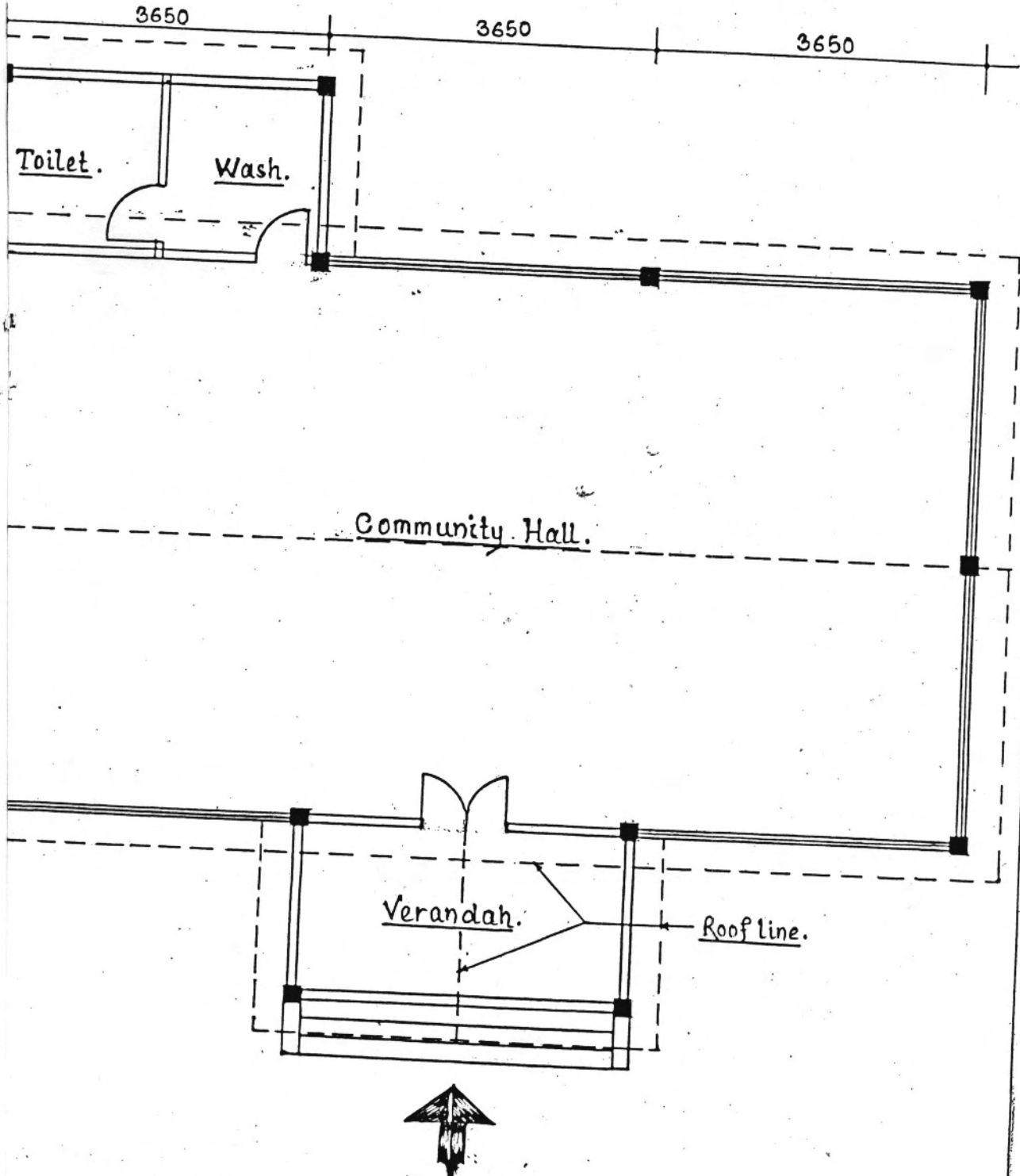
C.E.O

Dibrugarh Zilla Parisad  
Dibrugarh

T.S. is accorded for Rs. 3,00,000/- (Ph-II)  
(Rupees three lakh) only to be drawn  
from the H/A. 13th finance 2011-12

6/6/12  
Executive Engineer  
Zila Parishad : Dibrugarh

LINE PLAN OF A COMMUNITY HALL RELATING TO  
GENERAL PERFORMANCE GRANT TO PRIs. UNDER THE  
AWARD OF 13TH. F.C. DURING 2011-12. (Not to Scale).



*[Signature]*  
Junior Engineer  
in the Parishad, Dibrugarh

*[Signature]*  
A.P.O. (T)  
Zilla Parishad Dibrugarh

*[Signature]*  
Chief Executive Officer  
Zilla Parishad Dibrugarh