

(49)

Name of scheme :: Construction of Community Hall cum Meeting Hall  
under the 13<sup>th</sup> FC 2011-2012

Name of District :: Sonitpur

Estimated Amount :: Rs 8.00 Lakh

Name of ZP :: Sonitpur

## Report


The estimate is amounting **Rs 8,00,000/-** (Rupees Eight lakh) has been prepared to show the probable cost of the above mention scheme.


This scheme is taken under the 13<sup>th</sup> Finance Commission and adopted by the Members of the Sonitpur Zilla Parishad and finally approved by the President of Sonitpur Zilla Parishad.

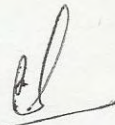
This scheme will be facilitated for assemble the people for holding meeting and other social cultural Programme etc.

All the rate has been quoted from the APWD SR (Building) 2011-12.

All the works will be carried out as per general rule and the specification current laid in the state of Assam.

  
APO (T)  
Sonitpur Zilla Parishad  
Tezpur

  
Executive Engineer  
Sonitpur Zilla Parishad  
Tezpur

  
Junior Engineer  
Sonitpur Zilla Parishad  
Tezpur

## MODEL ESTIMATE

48

NAME OF WORK :- CONSTRUCTION OF COMMUNITY HALL CUM MEETING  
HALL UNDER THE 13th F.C. 2011-2012  
NAME OF ZP :- SONITPUR  
ESTIMATED AMOUNT :- 8 Lakh

### ESTIMATE

**Item No. 1/1.1:** Earthwork in excavation for foundation of walls, retaining walls, footing of column, steps, septic tank etc. including refilling (return filling) the quantity as necessary after completion of work, breaking clods in return filling, dressing, watering and ramming etc. and removal of surplus earth with all lead and lifts as directed and specified in the following classification of soils including bailing out water where necessary as directed and specified.  
(A) Upto a depth of 2.00 m below the existing G.L.  
(a) In ordering ~~Soil~~ ordinary soil

2×2×9.00×0.60×0.40	=	4.32 m <sup>3</sup>
1×2×12.00×0.60×0.40	=	45.76 m <sup>3</sup>
1×2×10.00×0.60×0.40	=	4.80 m <sup>3</sup>
1×1×6.00×0.60×0.40	=	1.44 m <sup>3</sup>
1×1×9.00×0.90×0.15	=	1.22 m <sup>3</sup>
1×4×1.20×0.90×0.15	=	0.65 m <sup>3</sup>
1×24×0.40×0.40×0.40	=	1.54 m <sup>3</sup>

Total 19.73 m<sup>3</sup>

@ Rs.64.67/m<sup>3</sup>

Rs. 1276.00 ✓

**Item No. 2/4.1.1:** Providing brick soling in foundation and under floor with stone/ best quality picked jhama brick, sand packed and laid to level and in panel after preparing the subgrade as directed including all labour and materials and if necessary dewatering, complete.

(a) Brick in flat Soling

1×2×9.00×0.40	=	7.20 m <sup>2</sup>
1×2×12.00×0.40	=	9.60 m <sup>2</sup>
1×2×10.00×0.40	=	8.00 m <sup>2</sup>
1×1×6.00×0.40	=	2.40 m <sup>2</sup>
1×1×9.00×12.00	=	108 m <sup>2</sup>

Total 135.20 m<sup>2</sup>

@ Rs.286.37/m<sup>2</sup>

Rs.38717.00

Item No. 3/2:1.1:

Plain cement concrete work with coarse aggregate of size 13mm to 32mm in foundation bed for footing steps, wall, brick work etc. as directed and specified including dewatering if necessary, and curing complete (shuttering where necessary shall be measured and paid separately).

(a) . In prop. 1:3:6

1x2x9.00x0.40x0.05 = 0.36 m³

1x2x12.00x0.40x0.05 = 0.48 m³

1x2x10.00x0.40x0.05 = 0.40 m³

1x1x6.00x0.40x0.05 = 0.12 m³

1x1x9.00x0.90x0.05 = 0.41 m³

1x4x1.20x0.90x0.05 = 0.22 m³

Total

1.99 m³

@ Rs. 3733.63/m3

Rs.7430.00 ✓

Item No. 4/18.1.1:

Supplying fitting and fixing in position reinforcement bars conforming to relevant I.S. Code for R.C.C work/ R.B. walling including straightening, clearing, cutting and bending to proper shapes and length as per details, supplying and binding with 20G annealed black wire and placing in position with proper block, supports, chairs, spacers etc, complete (upto 1st floor level).

(b) ISI approved TMT Base-

(1) TATA/ SAIL

12 mm

Column - 1x24x4x5.10 = 489.60 RM

Lintel- 1x44.00x4 = 176.00 RM

Post plate beam- 1x5x72.00 = 360.00 RM

Total 1025.00m x 0.89 Kg

@ Rs. 0.89 Kg/m

Rs. 9.12 Qntl

10 mm

Chajja- 1x4x13x1.25 = 65.00 RM

@ Rs. 0.62 Kg/RM

Rs. 0.40 Qntl

8 mm & Stirrup

Column - 1x24x1.10x11 = 290.00 RM

Lintel- 1x294x0.65 = 191.10 RM

Post plate beam- 1x481x0.90 = 432.90 RM

Total 914.40 RM

Grand Total

⇒ 13.09 Qntl = 3.57 Qntl

@ Rs. 0.39 Kg/RM

Rs. 69251.00 ✓

@ 5290.41/8kl.

Item No. 5/3.1.1:

Providing form work of ordinary timber planking so as to give a rough finish including centering, shuttering, strutting, strutting and propping etc., height of propping and centering below supporting floor to ceiling not exceeding 4.0M and removal of the same for in-situ reinforced concrete and plain concrete work in :

3.1.1.1 Foundation, footing, bases of columns, pile cap, raft and mass concrete work etc.

(ii) Using 25mm thick plank

Column-  $1 \times 24 \times 2 \times 0.60 \times 0.30 = 8.64 \text{ m}^2$

Item No - 3.1.1.3

@ Rs. 140.84/m<sup>2</sup>

Rs. 1217.00

*Column, Pillars, Posts - 25mm thick*  
 $1 \times 24 \times 2 \times 3.35 \times 0.25 = 40.20 \text{ m}^2$   
 $1 \times 24 \times 2 \times 3.35 \times 0.25 = 32.16 \text{ m}^2$   
 3.1.1.3 Column, Piner, Post & Str *sides & soffits of beam, beam bracing etc.* @ 213.77/m<sup>2</sup> = Rs 15,466/-

(ii) Using 25mm thick plank

Lintel  $1 \times 2 \times 44.00 \times 0.20 = 17.60 \text{ m}^2$

Post plate beam  $1 \times 1 \times 72.00 \times 0.25 = 18.00 \text{ m}^2$

$1 \times 2 \times 72.00 \times 0.20 = 28.80 \text{ m}^2$

Total

64.4 m<sup>2</sup>

@ Rs. 16301/m<sup>2</sup>

Rs. 10498.00

Item No. 6/2.2.1:

Providing and laying plain/reinforced cement concrete works cement with coarse sand & 20mm down graded stone aggregate including dewatering if necessary, and curing complete but excluding cost of form work and reinforcement for reinforced cement concrete work (form work and reinforcement will be measured and paid separately)

(i) Using Mixture Machine

(A) In sub Structure up to P.L.

(b) m-20-1:15:3

Column -  $1 \times 24 \times 0.40 \times 0.40 \times 0.40 = 1.54 \text{ m}^3$

$1 \times 24 \times 0.25 \times 0.25 \times 1.05 = 1.61 \text{ m}^3$

Total

3.15 m<sup>3</sup>

@ Rs. 5164.83/m<sup>3</sup>

Rs. 16,269.00

(B) Super Structure from Pl up to 1st Flor (1:1.5:1)

Column -  $1 \times 24 \times 0.20 \times 0.20 \times 3.35 = 3.22 \text{ m}^3$

Lintel-  $1 \times 1 \times 44.00 \times 0.15 \times 0.13 = 0.86 \text{ m}^3$

Post plate beam  $1 \times 1 \times 72.00 \times 0.20 \times 0.20 = 2.88 \text{ m}^3$

Charge  $1 \times 4 \times 1.25 \times 0.60 \times 0.05 = 0.15 \text{ m}^3$

Total

7.11 m<sup>3</sup>

@ Rs. 5364.11/m<sup>3</sup>

Rs. 38139.00

**Item No. 7/4.1.4:** Brick work in cement mortar with 1st class brick including racking out joints and dewatering if necessary, and curing complete as directed on sub-structure up to piinth level.

(b) In proporation 1:4

Plainth Wall -	1×74.00×1.07×0.25	=	19.80 m <sup>3</sup>
Step -	1×9.00×0.90×0.15	=	1.22 m <sup>3</sup>
	1×9.00×0.60×0.15	=	0.81 m <sup>3</sup>
	1×9.00×0.30×0.15	=	0.41 m <sup>3</sup>
	1×4×1.20×0.15×(0.90+0.60+0.30)	=	1.30 m <sup>3</sup>
<b>Total</b>			<u><u>22.94 m<sup>3</sup></u></u>

@ Rs. 4632.29/m<sup>3</sup>

Rs. 1,06,265.00 ✓

**Item No. 8/1.3:** Earth/ sand filling in layers not more then 150mm thick including necessary carriage watering, ramming etc. complete as directed and specified including payment of land compensation, forest royalty, salce tax and otherduites and axes as may be neccssary.

c) With silt (predominantly non plastic) by truck carriage including loading and inloading.

$$1 \times 1 \times 9.00 \times 12.00 \times 0.60 = 64.80 \text{ m}^3$$

@ Rs. 322,75/ m<sup>3</sup>

Rs. 20,914.00 ✓

**Item No. 9/4.1.7:** 112 mm thick 1st class brick nogged wall in cement moral including racking out joints and curing complete as directed in super structure above plinth up to 1st floor level (protruding M.S rod/Tor steel of column to be embeded in cement mortar and will be measured and paid separately)

Prop - 1:5

Wall -	1×2×10.00×3.35	=	67.00 m <sup>2</sup>
	1×2×6.00×3.35	=	40.20 m <sup>2</sup>
	1×2×2×1.50×3.35	=	20.10 m <sup>2</sup>
	1×½×9.00×1.50	=	6.75 m <sup>2</sup>
Less for Floor -	1×3×2.10×1.05	= (-)	6.62 m <sup>2</sup>
	1×3×2.10×0.90	= (-)	5.76 m <sup>2</sup>
Window -	1×8×2.10×1.05	= (-)	10.08 m <sup>2</sup>
	1×8×0.60×1.05	= (-)	5.04 m <sup>2</sup>

Total -

106.64 m<sup>2</sup> ✓

@ Rs. 499.76/ m<sup>2</sup>

Rs. 53,294.00 ✓

Item No. 10/9.1.2 : Providing wood work in frame (Chowk aths) of doors, windows clerestory windows and other similar works wrought, framed and fixed in position in contact with C.C or brick masonry wall including supplying, fitting and fixing with M.S. hold fast (40mmx3mmx250mm) as per design embeded in cement concrete block in proportion 1.2.4 and with two coats of kiricide ofling to the timber faces in contact with C.C and masory as directed and specified.

**(b) With 1st class timber (Hollock/Sundi)**

Door :-	1×6×2×2.10×0.08×0.15	=	0.30 m <sup>3</sup>
	1×3×1×0.90×0.08×0.15	=	<del>6.00</del> <sup>0.03</sup> m <sup>3</sup>
	1×3×1×0.75×0.08×0.15	=	0.03 m <sup>3</sup>
Window -	1×8×2×1.20×0.08×0.15	=	0.23 m <sup>3</sup>
	1×8×1×0.90×0.08×0.15	=	0.09 m <sup>3</sup>
C -W -	1×8×2×0.60×0.08×0.15	=	0.12 m <sup>3</sup>
	1×8×2×0.90×0.08×0.15	=	0.17 m <sup>3</sup>
	Total	=	<u>0.97 m<sup>3</sup></u>

@ Rs.46853.38/ m3

Rs. 45448.00 ✓

Item No. 11/9.9.2 : Providing fitting and fixing full panelled doors/windows including oxidiscd M.S butt hinges (100mm ×75 mm ×3.55mm) with necessary screws (other fitting to be measured and paid separately).

(b) With First class Local Wood (Hollock/Sundi)

(ii) 35 mm thick

D -	1×3×2.02×0.90	=	5.45 m <sup>2</sup>
	1×3×2.02×0.75	=	4.55 m <sup>2</sup>
W -	1×8×1.12×0.90	=	8.06 m <sup>2</sup>
Total			<u>18.06 m<sup>2</sup></u>

@ Rs.1725.92/ m<sup>2</sup>

Rs. 31170.00 ✓

Item No. 12/9.9.9 : Providing fitting and fixing fully glazed clerestory window and fan light including fitting and fixing 2 M.S pivot hinges (75mm × 20mm × 3mm), eye hook and nylon chord complete (glass panes shall be mesured and paid separately).

(c) With First Local Wood (Hollock/Sundi)

35 mm thick

1×8×0.45×0.90 = 3.24 m<sup>2</sup>

@ Rs. 964.50/ m<sup>2</sup>

Rs. 3190.00 ✓

Item No. 13/16.1 : Providing and fitting clear shut glass bedded in Putty  
(i) Area of glass not exceeding 0.15 m<sup>2</sup>  
(c) 3.00 mm thick

$$1 \times 8 \times 3 \times 0.30 \times 0.30 = 2.16 \text{ m}^2$$

@ Rs. 463.54 m<sup>2</sup> Rs. 1001.00 ✓

Item No. 14/9.3.1 : Providing wood work in frame of false ceiling partition etc. sawn wrought, framed hoisted and fixed in position with spikes, nails, M.S flat, angle/ cleats with bolt and nuts complete including kiricide oiling two coats to unexposed surfaces of the timber (M.S flats, angle cleats, and bolt and nuts required for flat, angle cleats wherever necessary shall be measured and paid separately).

(A) With Hollock/Bonsum/Sund

$$1 \times 11 \times 9.00 \times 0.08 \times 0.08 = 0.63 \text{ m}^3$$

$$1 \times 8 \times 12.00 \times 0.08 \times 0.08 = 0.61 \text{ m}^3$$

$$\text{Got} \text{Ke} - 1 \times 150 \times 0.30 \times 0.08 \times 0.05 = 0.07 \text{ m}^3$$

$$\text{Total} \quad \underline{\underline{1.31 \text{ m}^3}}$$

@ Rs. 29812.40/m<sup>3</sup> Rs. 39054.00 ✓

Item No. 15/18.3.3 : Providing fitting and fixing and histing of Tubuler roof trms including weding etc complete roof Truss = 6 nos @ 1.50Qntl each.

$$= 9.00 \text{ Qntl}$$

@ Rs. 5380.00/Qntl Rs. 48420.00 ✓

Item No. 16/8.1.2 : Providing corrugated gaivenised iron sheet roofing of TATA SHAKTEE/ SAIL including fitting and fixing necessary galvensised J or L hooks, bolts and nuts 8 mm dia with bitumen washer 25mm dia x3mm thick and 1.6 mm thick limpet washer complete excluding cost of roof truss, purlin etc. (Roof trusses and purlin etc. to be measured and paid separately).

(b) 50 mm Thick

$$1 \times 2 \times 5.50 \times 13.20 = 145.20 \text{ m}^3$$

@ Rs. 359.88/m<sup>2</sup> Rs. 52,255.00 ✓

Item No. 17/8.1.4 : Providing galvd iron ridging of TATA SHAKTEE/ SAIL including supplying and fixing necessary galvd screws/washers etc. complete as directed.

(e) 55 mm Thick (1) 150 mm Lap

$$1 \times 13.20 = 13.20 \text{ m}$$

@ Rs. 112.23 /M Rs. 1481.00 ✓

6,00,755/-

Item No. 18/10.2 : Providing fitting and fixing M.S. rGrill of required pattern at required spacing in wooden frames of windows and clerestory windows.

(1) Plain Grill (a) Fixed to wooden frame

W-  $1 \times 8 \times 1.12 \times 0.90 = 8.06 \text{ m}^2$

C/w -  $1 \times 8 \times 0.45 \times 0.90 = 3.24 \text{ m}^2$

Total - 11.30 m<sup>2</sup>

@ Rs. 1600 Kg/m<sup>2</sup> Total 180.80 Kg

@ Rs. 63.27/ Kg

Rs. 11439.00

Item No. 19/5.1.5 : 65 mm thick cement concrete floor consisting of 53 mm under layer of cement concrete in prop. 1:3:6 (1 cement : 3 coarse sand : 6 coarse aggregate of 25 mm and down) and 12 mm thick wearing coarse of cement sand plastering in prop 1:2 laid in panels and finished with a floating coat of neat cement finish (using cement slurry for bond @ 2.75 kg. per square meter of floor area) including curing etc. Complete as directed.

$1 \times 9.00 \times 12.00 = 108.00 \text{ m}^2$

@ Rs. 435.43/ m<sup>2</sup>

Rs. 47026.00

Item No. 20/6.2.1 : 10 mm thick Cement plaster in single coat on fair side of brick/concrete walls for internal rounded angles, chamfers and / or rounded angles not exceeding 80mm in girth and finished even and smooth including curing complete as directed.

(b) In Prop - 1:6

*Area as above to item No - 9/4.1.7.*  
~~Average~~

Total - 106.64 m<sup>2</sup>

@ Rs. 76.48/m<sup>2</sup>

Rs. 8156.00

Item No. 21/6.2.2 : 15 mm thick cement in single coat on boughside of building wall

In Prop - 1:6

~~Area = 106.64~~

Area = 106.64 m<sup>2</sup>

@ Rs. 95.10/ m<sup>2</sup>

Rs. 10,141.00



4

Item No. 22/15.2.1 : Supplying, fitting, fixing anodised aluminium fitting of approved make, reasonably smooth, free from sharp edges and corners, flaws and other defects and with conter sunk holes for screws including necessary aluminium screws etc. complete. (anodised to bright natural matt \* satin finished)

- (a) Sliding Door Balts
  - (i) 300mm x 16 mm Total Nos = 5 Nos
  - @ Rs. 290.34/ No \_\_\_\_\_ Rs. 1452.00 ✓
- (b) Tower Balt
  - (ii) 250mm x 12 mm Total Nos = 36 Nos.
  - @ Rs. 119.59/ No. \_\_\_\_\_ Rs. 4305.00 ✓
- (c) Door Handle - ~~26 nos~~ Total Nos = ~~26~~ Nos.
  - (iii) 150 mm
  - @ Rs. ~~61.09/ No.~~ Rs. 75.37/each \_\_\_\_\_ Rs. 1960.00 ✓
- (d) Gate Shutter horn & eye
  - (iv) 250 mm Total - 16 Nos
  - @ Rs. 31.82 /No. \_\_\_\_\_ Rs. 509.00 ✓

Item No. 23/13.6.3 : Applying priming coat over new wood and wood based surfaces over 100mm ingirth/width after including preparing the surface by throughly clannng oil, grcasc, snd other forcign matter. sand papcring and knotting.

(b) With ready mixed paint wood primer (white)

C/w-	1x8x3.00x0.30	=	7.20 m <sup>2</sup> .
D -	1x3x5.10x0.30	=	4.59 m <sup>2</sup> ✓
	1x3x4.95x0.30	=	4.46 m <sup>2</sup> ✓
W-	1x8x4.20x0.30	=	10.00 m <sup>2</sup> .
	1x3x2.02x0.90x2.25	=	12.27 m <sup>2</sup> .
Door-	1x3x2.02x0.75x2.25	=	10.23 m <sup>2</sup> .
W-	1x8x0.45x0.90x0.75	=	18.14 m <sup>2</sup> .
C/w-	158x0.45x0.90x0.75	=	2.43 m <sup>2</sup> .
	Total	=	69.40 m <sup>2</sup>

@ Rs. 30.91/ m<sup>2</sup> Rs. 2145.00 ✓

Item No. 24/13.6.5 : Painting two coats (excluding priming coat) on new wood and wood based surface with enamel paint of approved brand and manufacture (Asian paint/ Berger paint/ ICI paint/ J & N paint/ Nerolac) to give an even shade including clearing the surfaces of all dirt, dust and other foreign matter sand papering and stopping.

- (i) Surface over 100 mm in width or girth
- (ii) General purpose paint
- Area as above 69.40 m<sup>2</sup>

@ Rs. 45.80/ m<sup>2</sup> Rs. 3179.00 ✓

6,91,067/-

Item No 25 a) Applying one coat of cement primer of approved brand and sand papered smooth.  
 Area from item 23/13.2.2 = 63.75 m<sup>2</sup>.

@ 32.63/m<sup>2</sup>

Rs 2080.00

Item No. 25/13.2.3: Finishing wall with two coats of waterproofing cement coating of Unicorn "Shakti" of approved brand and of best grade on New wall surface (2 coats) Brand of required shade by thinning 1 part of paint with 1 part of water to give an even shade after thoroughly brooming the surface to remove all dirt and remains of loose powdered materials as specified and directed by the department.

(a) Applying one coat of Cement Primer

Area - 63.75 m<sup>2</sup> (As above)

@ ~~Rs. 32.63/m<sup>2</sup>~~

~~Rs. 2080.00~~

(b) Rs. 40.83/m<sup>2</sup>

Rs. 2603.00

Item No. 26/19.2: Providing, fitting and fixing A.C. building board in ceiling with necessary nails, wood screws including 1st class local wood 50mm x 12mm (hollock/bonsum/sundi) be using including painting two coats to timber beads complete as directed (ceiling joist to be measured and paid separately).

@ 4mm thick

1 x 9.00 x 12.00 = 108.00 m<sup>2</sup>

@ Rs. 269.44/m<sup>2</sup>

Rs. 29,100.00

Item No. 27/13.2.2: (f) Distemping with dry distemper

Total Area Plaster - 2 x 106.64 = 213.28 m<sup>2</sup>

(+) Cilling Area = 1 x 9 x 17.00 = 108.00 m<sup>2</sup>

Deduction for <sup>Cement</sup> Painting area -

1 x 2 x 3.00 x 3.35 = (-) 20.10 m<sup>2</sup>

1 x 1 x 9.00 x 3.35 = (-) 30.15 m<sup>2</sup>

1 x 2 x 1/2 x 9.00 x 1.50 = (-) 13.50 m<sup>2</sup>

257.53 m<sup>2</sup>

} 63.75 m<sup>2</sup>

@ Rs. 62.42/m<sup>2</sup>

Rs. 16075.00

Item No. 28/19.4: Providing Drain with brick work in Cement mortar 10 cm thick side 10 cm thick bed over flat brick soling including 15mm cement plaster Prop 1:3 of finished.

(i) 300 mm wide average 150mm deep with bed slope 1 in 150 with lintal depth 100mm

Total Length - 50.00 M 18.00 m

@ Rs. 631.88

Rs. 11374.80

Rs. 31594.00

Item No- 29/19.2 providing plinth protection with bricks flat laid in cement mortar finished

1 x 2 x 10.2 x 0.60 = 12.24 m<sup>2</sup>

1 x 2 x 12.00 x 0.60 = 14.40 "

@ Rs. 458.56/m<sup>2</sup>

26.64 m<sup>2</sup>

Rs. 12,203.50

Grand Total	Rs.	7,64,502.00
30. Less 10% Contractor Profit		7,84,702.00
		76450.00
		<u>78470.00</u>
	Rs.	688052.00
31. Water Supply and Sanitary Work L/s	Rs.	30,000
32. Internal Electrification L/s	Rs.	50,000
33. Difference of cost	Rs.	30447.00
34. Contingency L/s	Rs.	<u>3768.00</u>
		1,501.00
Grand Total	Rs.	800000.00

(Rupees Eight Lakhs) Only

*[Signature]*  
 Junior Engineer  
 Sonitpur Zilla Parishad  
 Tezpur

Difference of Cost of Materials

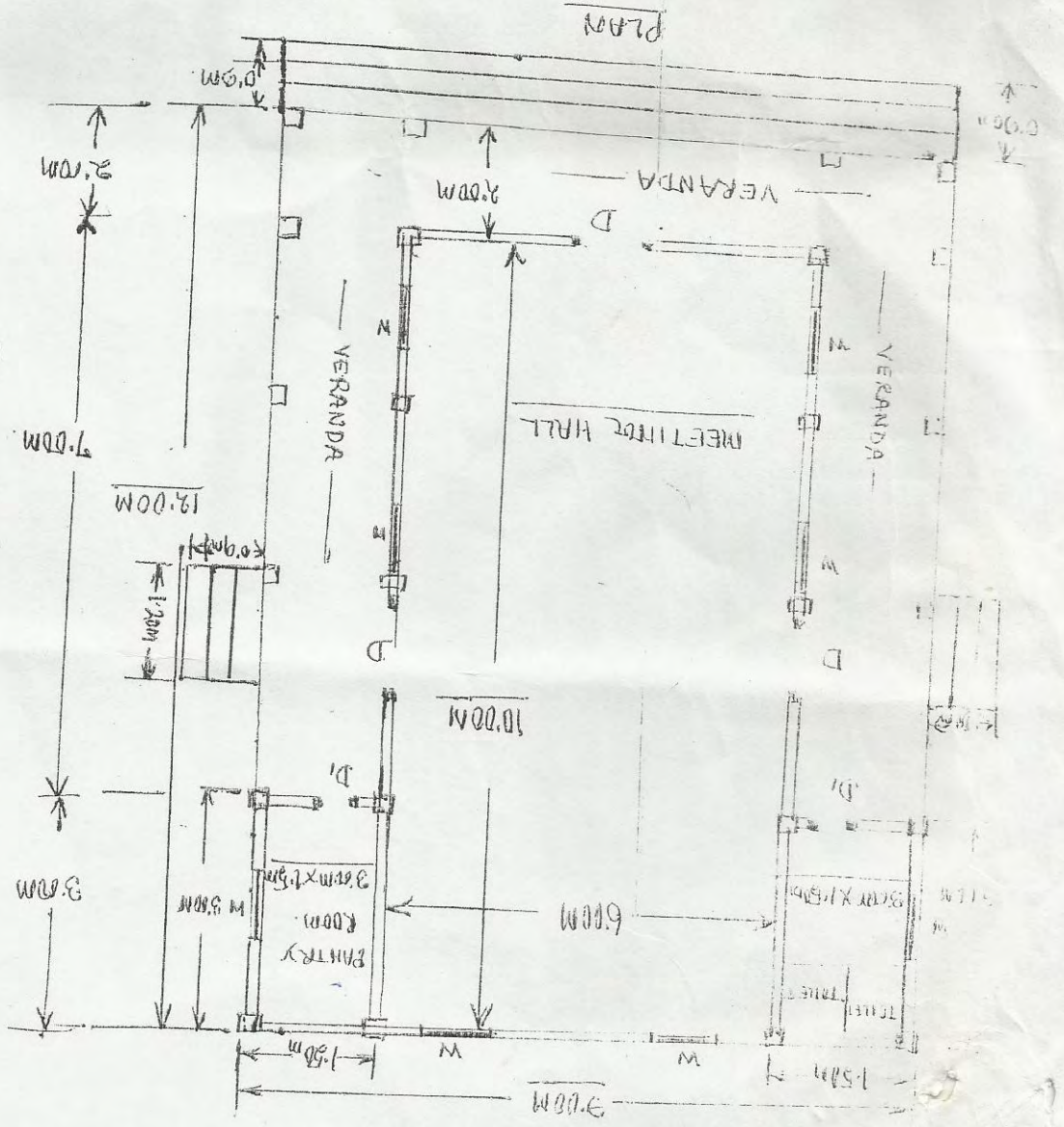
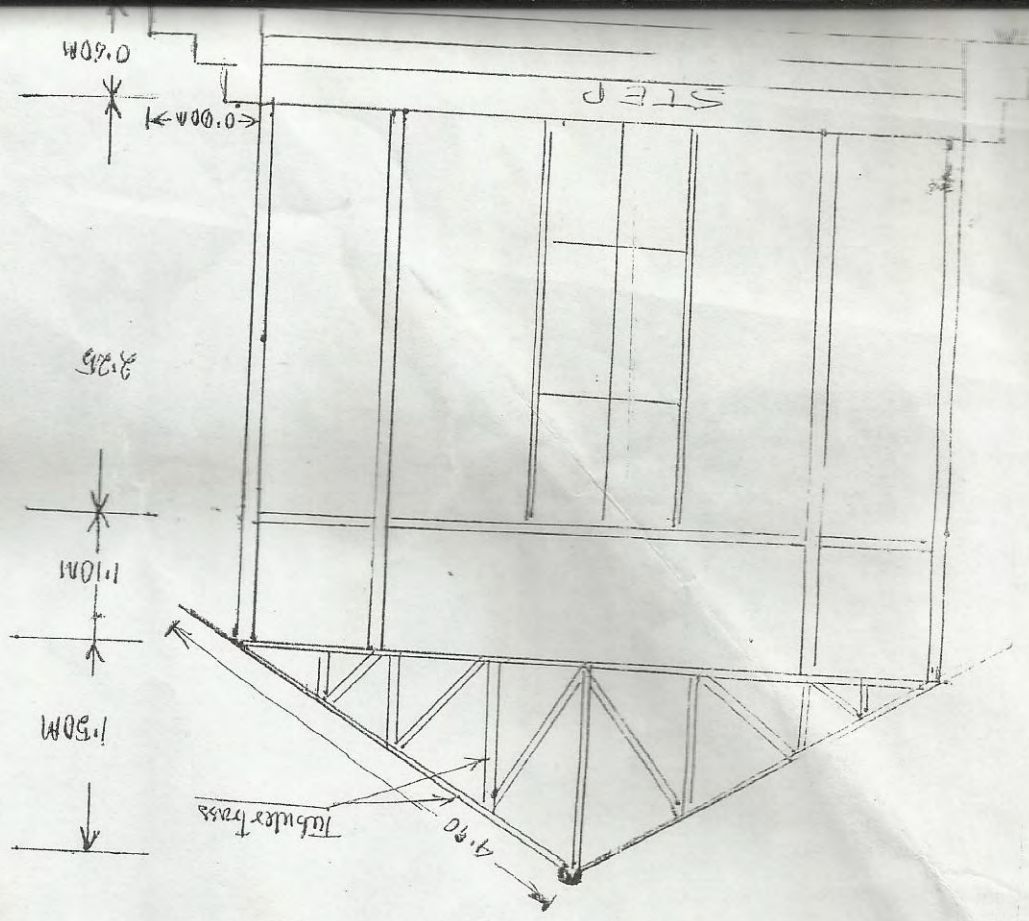
- ① Cement — 254 bags @ Rs. 65.00/bag. = Rs. 16,510.00
  - ② TMT bar — 9.52 cutl @ Rs. 1461.00/cutl = Rs. 13,937.00
- Cost —————  
 Rs. 30,447.00

*[Signature]*  
 J. E., JEP.

Technically Approved.

*[Signature]*  
 Superintending Engineer, PWD  
 Tezpur Building Circle,  
 TEZPUR

*[Signature]*  
 21/6/12



PLINTH AREA  
 $18.02\text{M} \times 9.00\text{M} = 108\text{M}^2$   
 $(39.6' \times 29.7' = 1176.12\text{SFT})$

- D = 2.10M x 1.10M
- D<sub>1</sub> = 2.80M x 1.00M
- W = 1.30M x 1.00M



(NOT TO SCALE)